

VARI***LITE**  Strand



Strand NEO Compact 10 Console

NEO Compact 10 Console

All the power of NEO in a smaller, more portable package – the most powerful console at this size and price

Integrated Keyboard – Command line support allows for rapid console programming

Adapts to the Way You Work – User-configurable faders, buttons, and palettes

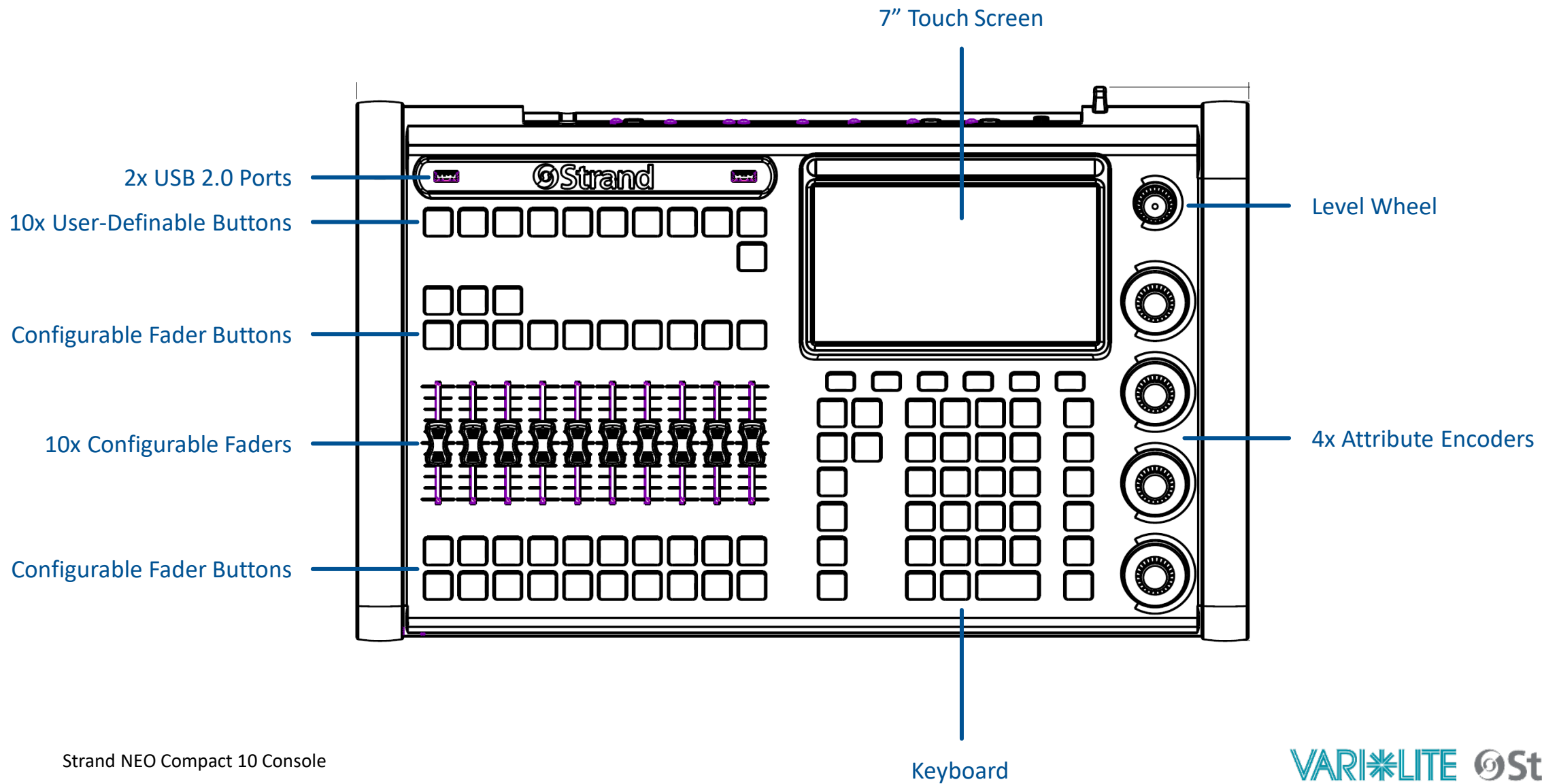
Seven FX Engines – Make it easy to achieve the look you desire

Strand Advantage – Strand, Vari-Lite, and CK fixtures do not consume universes

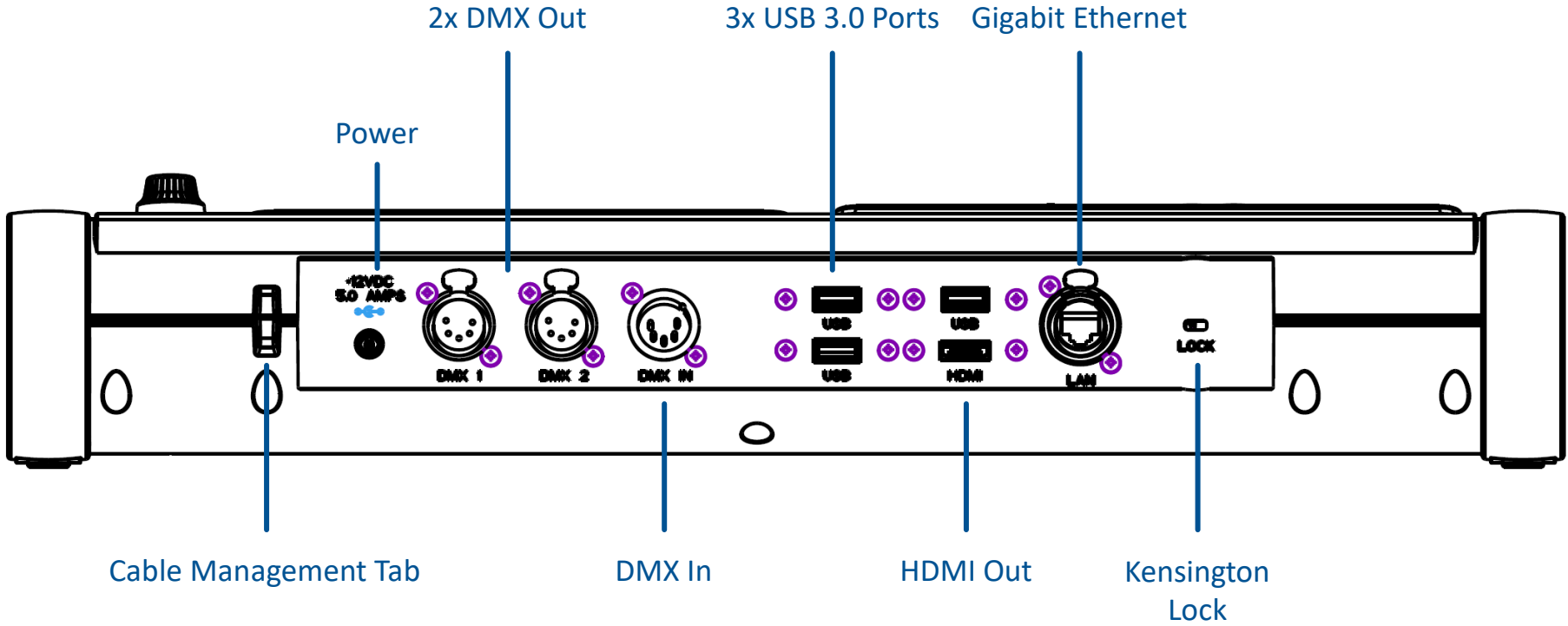
Vision.Net Integration – Generate and respond-to Vision.Net messages to integrate show and architectural control



HARDWARE OVERVIEW



HARDWARE OVERVIEW



BUILT-IN USER INTERFACE

UI refined to make NEO Compact intuitive and make the best use of 7" screen real-estate

The screenshot displays the NEO Compact 10 Console user interface. At the top, there are seven tabs: Channels, Select, Preset, Position, Color, Beam, and FX. The main area is a grid of 55 numbered buttons (1-55) arranged in a 5x11 grid. Each button contains a channel name and a progress indicator. The channels include: 1-6 (Cove Front<SL), 7-8 (1 LX Front<SL), 11 (Cove Front>SR), 12-18 (Cove Front>SR), 21-22 (Cove), 23-28 (Cove and 1 LX), 31-33 (Front>LED), 34-38 (Front>LED), 41-44 (<BB Pit), 45-48 (<BB Apron), 51-54 (Pit BB>), and 55 (Apron BB>). On the right side, there is an Encoder Display showing 'Neo Capture School' and 'Scroll Channels', a 'Scale' button, and a 'MORE >' button. At the bottom, there is a Command Line showing 'REL : Success' and 'Live:'. Below the Command Line are several softkey buttons: 'Select Previous', 'Page', 'Close', 'SC', 'Park', and 'MORE >'. Callouts point to the 'Tabs' (Channels), 'Encoder Display', 'Command Line', and 'Softkeys'.

Tabs
Change information
Shown in main area

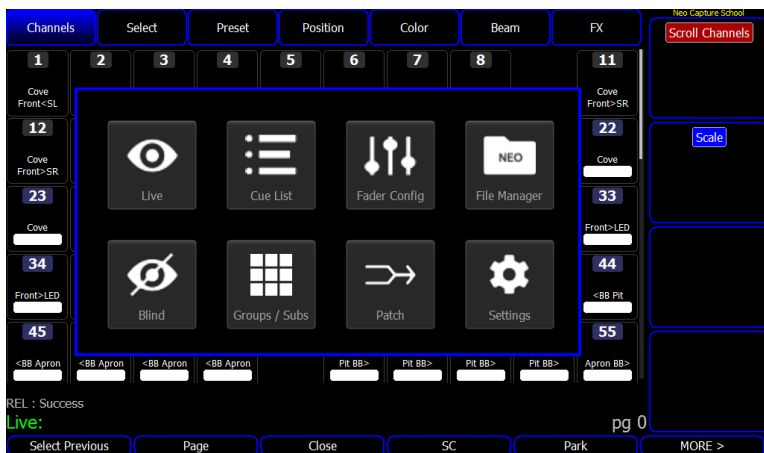
Encoder Display
Shows functionality and
status information

Command Line

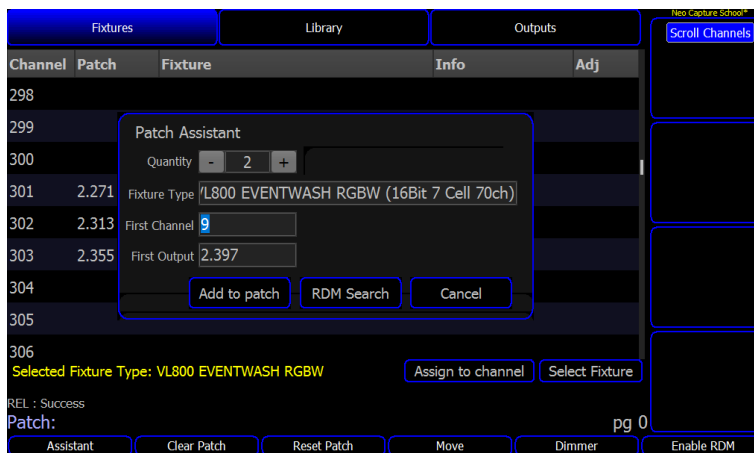
Softkeys
Shows function of softkey
buttons

TOUCH SCREEN UI

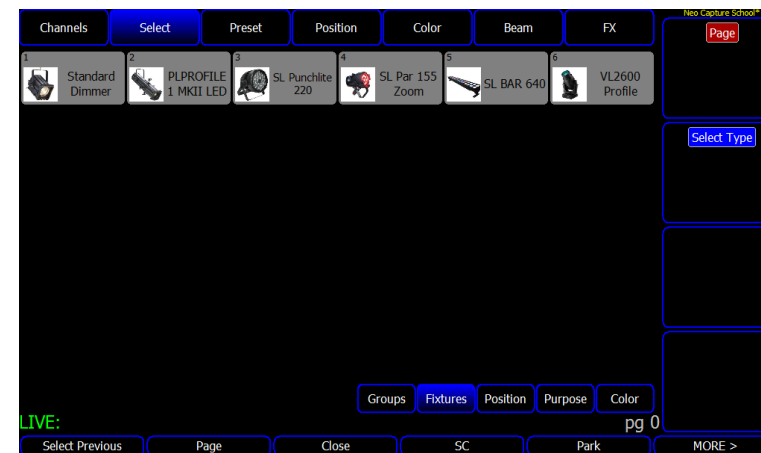
UI refined to make NEO Compact intuitive and make the best use of 7" screen real-estate



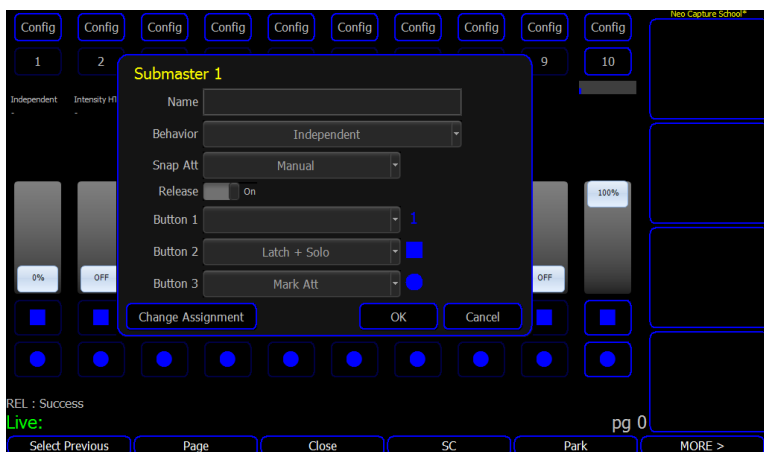
View Menu



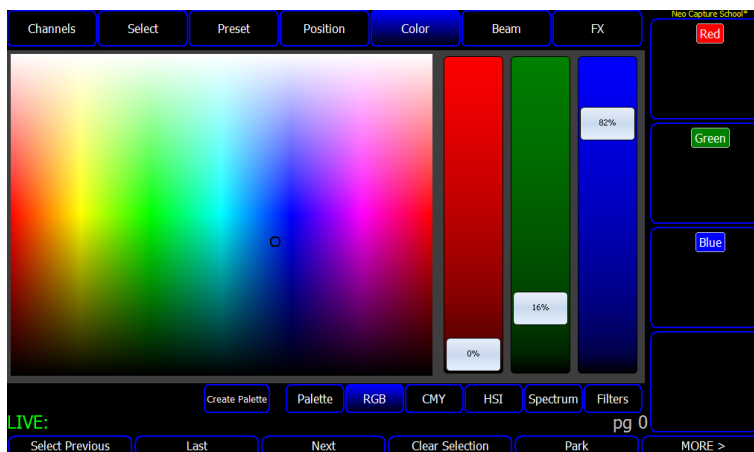
Patch Assistant



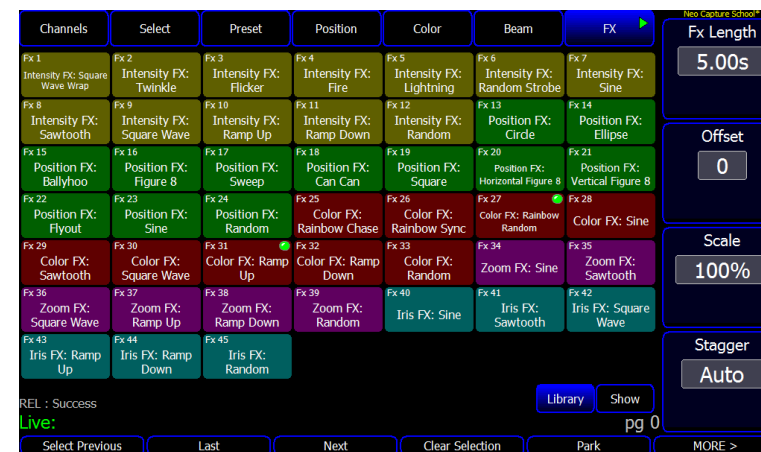
Fixture Selection



Fader Config



Color Selection



FX Selection

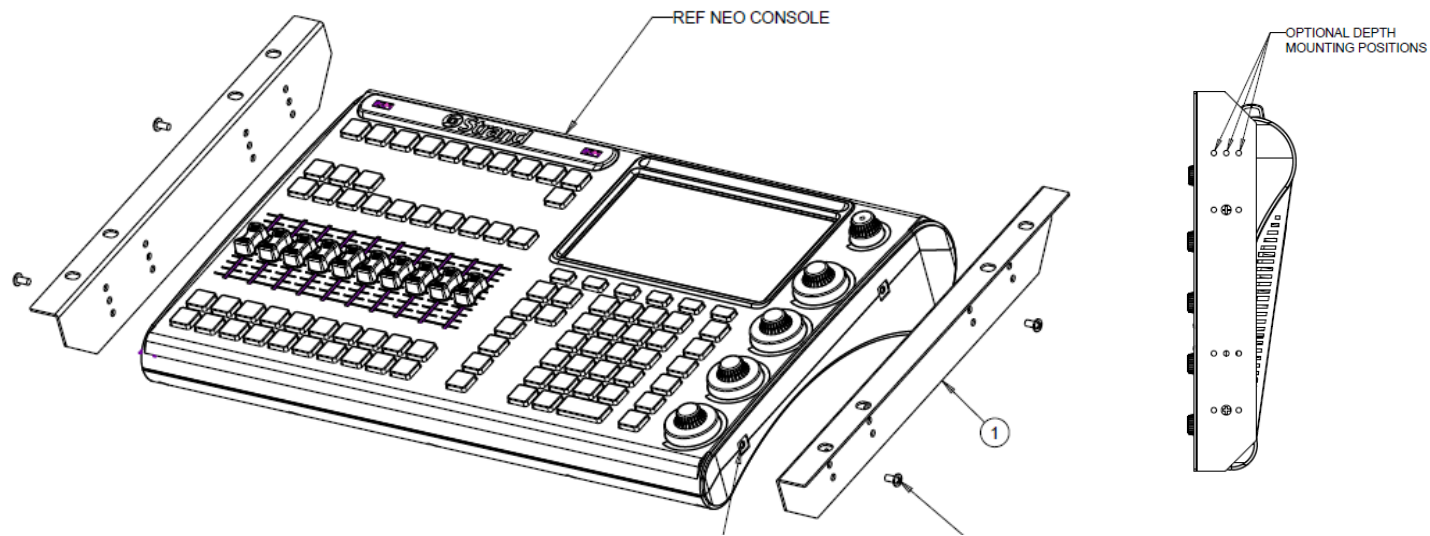
NEO COMPACT 10 CONSOLE KEY SPECIFICATIONS

SPECIFICATION	VALUE
Power	+12 VDC
DMX Ports	2x Output 1x Input
HDMI Ports	1x HDMI 1.4b Max Resolution: 4K30
Network Ports	1x Gigabit Ethernet
USB Ports	3x USB 3.0 (rear panel) 2x USB 2.0 (top panel)
Protocol Support	Shownet E1.31 (Streaming ACN) Artnet DMX512 KiNet (Color Kinetics Control Protocol) Pathway RDM
Universes	4 (default) Upgradeable to 10

SPECIFICATION	VALUE
Touchscreen	Internal 7" touchscreen External touchscreens supported via USB connection
Faders	10x configurable non-motorized faders
Encoders	4x Attribute Encoders 1x Level Wheel Encoder
Construction	Impact-resistant plastic
Size (HxWxD)	11.6in x 19in x 3.6in

ACCESSORIES

NEO Compact 10 Rack Mount Kit (54104-910)



ACCESSORY	PART NUMBER
Rack Mount Kit	54104-910
Replacement Power Supply	54104-901
Replacement Dust Cover	54104-911
NEO 10U License	54101-002
24-inch Touchscreen Monitor	91024

PRICE & AVAILABILITY

Note: Pricing shown is in USD from the Americas price list, effective July 2020. Please check the current regional price lists for the most up-to-date price.

PART	SKU	MSRP	Availability
NEO Compact 10 Console, 4U	54104-010	\$4999	Summer 2020
Rack Mount Kit	54104-910	\$149	Summer 2020
Replacement Power Supply	54104-901	\$129	Summer 2020
Replacement Dust Cover	54104-911	\$59	Summer 2020
NEO 10U License	54101-002	\$1999	Now

VARI*LITE ©Strand